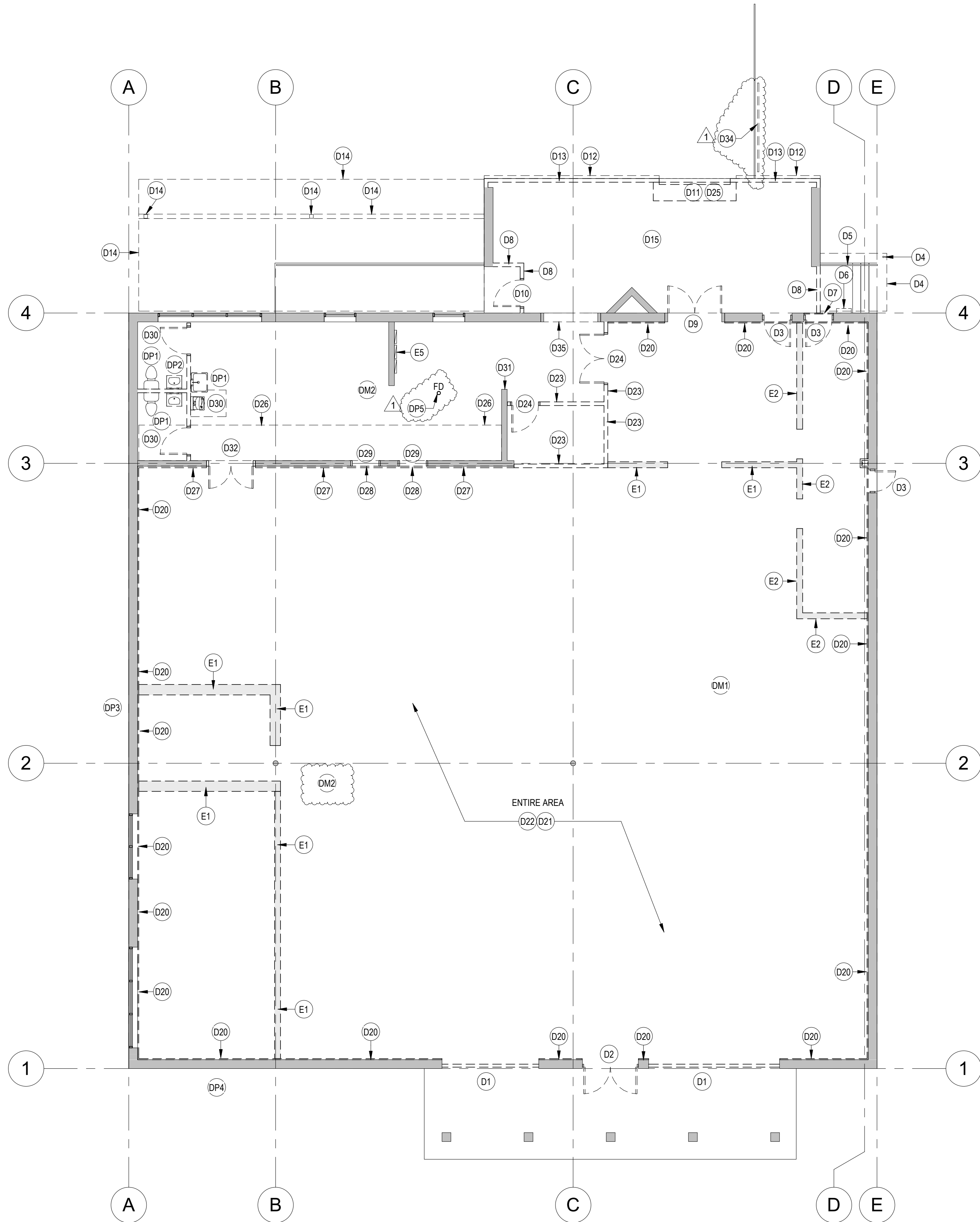


1 DEMOLITION FLOOR PLAN
D1.1 1/8" = 1'-0"



GENERAL NOTES

A. SEE DEMOLITION PLAN KEYNOTES AND LEGEND FOR SPECIFIC REQUIREMENTS.

B. CONTRACTOR SHALL BE RESPONSIBLE FOR REVIEWING EXISTING BUILDING AND CONDITIONS AND BECOMING ADEQUATELY FAMILIAR WITH THE EXISTING CONDITIONS IN ORDER TO ADEQUATELY BID THE PROJECT.

C. CONTRACTOR TO INCLUDE IN THE COST OF THE WORK, ALL LIFTS AND SCAFFOLDING REQUIRED TO ACCOMPLISH THE WORK INDICATED.

D. CONTRACTOR SHALL DOCUMENT ALL EXISTING CONDITIONS VIA PHOTOGRAPHY AND OR VIDEO PRIOR TO BEGINNING ANY DEMOLITION WORK.

GENERAL DEMOLITION NOTES

A. ALL EXISTING CONSTRUCTION SHALL REMAIN UNLESS NOTED OTHERWISE.

B. CONTRACTOR SHALL PROVIDE TEMPORARY PROTECTION OF ALL EXISTING CONSTRUCTION TO REMAIN DURING DEMOLITION AND RENOVATION WORK.

C. CONTRACTOR SHALL FIELD VERIFY ALL EXISTING FIELD CONDITIONS, QUANTITIES AND DIMENSIONS PRIOR TO ANY DEMOLITION OR RENOVATION WORK AND REPORT ANY DISCREPANCIES TO THE ARCHITECT.

D. EXISTING SERVICES THAT ARE NOT SHOWN, BUT ARE DISCOVERED DURING DEMOLITION, SHALL BE BROUGHT TO THE ATTENTION OF THE ARCHITECT/ENGINEER BY THE CONTRACTOR FOR PROPER COORDINATION. REMOVE, REWORK AND/OR REROUTE THE EXISTING UTILITIES AS DIRECTED BY THE ARCHITECT/ENGINEER.

E. EXCEPT FOR STRUCTURAL OR SUPPORTING BUILDING COMPONENTS, REMOVE ALL EXISTING CONSTRUCTION AND FINISHES NECESSARY FOR THE COMPLETION OF WORK AS INDICATED OR SHOWN ON DRAWINGS, INCLUDING BUT NOT LIMITED TO ITEMS SHOWN TO BE REMOVED OR DEMOLISHED.

F. WHERE ITEMS TO BE REMOVED ADJUT ITEMS TO REMAIN, CONTRACTOR SHALL BE RESPONSIBLE FOR REPAIRING ITEM TO REMAIN TO MATCH EXISTING CONDITION.

G. PATCH (TO MATCH EXISTING) ALL EXISTING CONSTRUCTION TO REMAIN AND/OR DAMAGED DUE TO ANY DEMOLITION OR RENOVATION WORK.

J. REMOVE ALL EXISTING PIPING OR CONDUIT THAT HAS BEEN ABANDONED IN PLACE AND IS NO LONGER IN SERVICE.

K. WHERE APPLICABLE LEVEL ALL EXISTING FLOORS AS REQUIRED TO RECEIVE NEW FLOOR FINISHES. INSTALL REQUIRED TRANSITION PIECES BETWEEN VARIOUS FLOOR FINISHES SUITABLE FOR CONDITIONS.

L. REMOVE EXISTING CEILING OR OVERHEAD SUPPORTED AND WALL MOUNTED ELECTRICAL DEVICES, FIXTURES AND EQUIPMENT NOT INDICATED TO BE A PART OF THE COMPLETED WORK.

M. PREPARE EXISTING WALL SURFACES TO RECEIVE NEW CONSTRUCTION INCLUDING REMOVAL OF ALL MISCELLANEOUS ITEMS AND DEVICES AFIXED TO WALL SURFACES THAT ARE NOT OTHERWISE IDENTIFIED.

K. PREPARE THE ENTIRE UNDERSIDE OF METAL ROOF DECK TO RECEIVE NEW SPRAY FOAM CLOSED CELL INSULATION.

DEMOLITION FLOOR PLAN LEGEND

EXISTING WALL TO REMAIN

EXISTING WALL TO BE REMOVED

EXISTING DOOR TO BE REMOVED

EXISTING DOOR TO REMAIN

LINE OF OBJECT BE REMOVED

DEMOLITION FLOOR PLAN KEYNOTE LEGEND

D1 REMOVE EXISTING STOREFRONT WINDOW IN ITS ENTIRETY AND PREPARE OPENING TO RECEIVE NEW STOREFRONT

D2 REMOVE EXISTING STOREFRONT DOOR AND FRAME AND TRANSOM AND THRESHOLD IN ITS ENTIRETY AND PREPARE OPENING TO RECEIVE NEW STOREFRONT FRAME AND DOOR AND TRANSOM

D3 REMOVE EXISTING HOLLOW METAL DOOR AND FRAME AND THRESHOLD IN ITS ENTIRETY AND PREPARE OPENING TO RECEIVE NEW STOREFRONT WINDOW

D4 REMOVE EXISTING METAL CANOPY ABOVE EXISTING CONCRETE STAIRS. REMOVE EXISTING STEEL POST WITH REMOVING 4 ANCHORS INTO CONCRETE AT EXISTING BASE PLATE

D5 REMOVE EXISTING STEEL PIPE HANDRAIL FROM STAIR WITH REMOVING 4 ANCHORS INTO CONCRETE OR CMU WALL AT EXISTING ANCHOR PLATES AT EACH VERTICAL POST AND AT EACH HORIZONTAL RAIL

D6 REMOVE EXISTING METAL SHELF FROM EXTERIOR WALL

D7 REMOVE EXISTING WOOD SIDING AND PLYWOOD FROM DOOR OPENING AND ASSOCIATED FRAMING

D8 REMOVE EXISTING WALL FRAMING WITH WOOD SIDING ON EXTERIOR SIDE AND GYPSUM WALL BOARD ON INTERIOR SIDE FROM OPENING BETWEEN MASONRY WALL AND BUILDING EXTERIOR WALL

D9 REMOVE EXISTING METAL CRASH DOORS AND ALL ASSOCIATE HARDWARE FROM EXISTING HOLLOW METAL DOOR FRAME. HOLLOW METAL FRAME TO REMAIN. REMOVE DOOR THRESHOLD

D10 REMOVE EXISTING HOLLOW METAL DOOR AND FRAME

D11 REMOVE EXISTING DOCK LEVELER IN ITS ENTIRETY

D12 REMOVE EXISTING WOOD BUMPERS AND STEEL ANGLE ON TOP OF WOOD BUMPERS. CUT ANCHOR BOLTS FLUSH WITH WALL AND PAINT ANCHOR BOLTS TO MATCH WALL SO THEY DO NOT RUST. PREPARE WALL SURFACE TO BE PAINTED.

D13 REMOVE EXISTING WALL FRAMING WITH WOOD SIDING ON EXTERIOR SIDE AND GYPSUM WALL BOARD ON INTERIOR SIDE ALONG FRONT FACE OF LOADING DOCK IN ITS ENTIRETY

D14 REMOVE EXISTING METAL CANOPY ABOVE EXISTING RAMP AND LOADING AREA. REMOVE EXISTING STEEL POST WITH REMOVING 4 ANCHORS INTO CONCRETE AT EXISTING BASE PLATE. REMOVE EXISTING STEEL BEAM WITH ANCHORAGE TO MASONRY WALL. REMOVE ANCHORS TO EXTERIOR WALL

D15 REMOVE EXISTING CEILING MOUNTED LIGHT FIXTURES AND ASSOCIATED EXPOSED CONDUITS ABOVE LOADING DOCK

D20 REMOVE EXISTING GYPSUM BOARD AND WOOD FLOORING ALONG THE PERIMETER OF THE BUILDING. GYPSUM BOARD MAY BE USED FOR INSTALLATION ALONG THE PERIMETER OF THE BUILDING WITH PARTITION TYPE SF-20 (SEE A3.2) IF IT CAN BE RE-INSTALLED TO LIKE NEW CONDITION.

D21 REMOVE ALL EXISTING ACOUSTICAL TILE CEILING GRID INCLUDING ALL HANGING WIRE, CLIPS AND SUPPORTS FROM THE ENTIRE INTERIOR OF THE BUILDING

D22 REMOVE ALL MISC EXISTING WOOD FRAMING ABOVE THE CEILING GRID. REMOVE ALL WOOD FROM THE BUILDING

D23 REMOVE EXISTING DRYWALL AND WOOD STUD PARTITION

D24 REMOVE EXISTING DOOR AND FRAME AND ASSOCIATED HARDWARE AND THRESHOLDS

D25 REMOVE EXISTING OVERHEAD COILING DOOR WITH GUIDES, FRAME AND SUPPORTS IN ITS ENTIRETY

D26 REMOVE EXISTING STEEL FRAMED CATWALK OVER HEAD AND ASSOCIATED GYPSUM BOARD CEILING

D27 REMOVE GYPSUM BOARD OVER WOOD FRAMING OVER CMU WALL

D28 REMOVE GYPSUM BOARD OVER WOOD FRAMING IN DOOR OPENING

D29 REMOVE HOLLOW METAL FRAME FROM CMU WALL

D30 REMOVE ALL CONSTRUCTION ASSOCIATED WITH EXISTING RESTROOMS INCLUDING, TOILETS, SINKS, DRINKING FOUNTAINS, WALLS, DOORS, CEILINGS, FLOOR FINISHES, EXHAUST FAN AND ANY ASSOCIATED DUCTWORK. CAP EXISTING PLUMBING BELOW FLOOR LINE SUCH THAT CAPS ARE PREPARED TO RECEIVE NEW FLOOR LEVELER

D31 REMOVE PLYWOOD SURROUND FROM MASONRY CORNER

D32 REMOVE DOOR AND FRAME. CONFIRM MASONRY LINTEL OVER DOOR IN CMU WALL BEFORE REMOVING

D34 REMOVE EXISTING STEEL GUARDRAIL. CUT OFF FLUSH WITH CONCRETE PAVEMENT AND GRIND DOWN SHARP EDGES AND FILL WITH CONCRETE

D35 REMOVE METAL THRESHOLD AT DOOR OPENING IN PREPARATION FOR NEW FLOOR LEVELER AND STOREFRONT

DM1 REMOVE ALL DUCTWORK, GRILLES AND WIRING ABOVE ASSOCIATED WITH REMOVAL OF EXISTING ROOF TOP AS ALSO INDICATED ON DRAWING A1.2 ROOF PLAN. SURVEY EXTENT OF EXISTING CONDITION TO INCLUDE IN BID NOTE - EXTENT OF DUCTWORK IS NOT SHOWN GRAPHICALLY

DM2 REMOVE ALL DUCTWORK ABOVE BACK TO THE DUCT DROPS THAT EXTEND THROUGH THE ROOF AT THE EXISTING ROOF TOP UNIT TO REMAIN AS ALSO INDICATED ON DRAWING A1.2 ROOF PLAN. DUCT DROPS THROUGH THE ROOF ARE TO REMAIN. SURVEY EXTENT OF EXISTING CONDITION TO INCLUDE IN BID NOTE - EXTENT OF DUCTWORK IS NOT SHOWN GRAPHICALLY

DP1 EXISTING PLUMBING FIXTURES TO BE REMOVED COMPLETE. CAP EXISTING WASTE, VENT AND SUPPLY PIPING BELOW FLOOR SLAB OR ABOVE FUTURE CEILING LEVEL OF 10'4" AS REQUIRED. EXISTING VENT THROUGH ROOF TO BE CAPPED AT TERMINATION TO PREVENT RAINWATER FROM ENTERING THE PIPING.

DP2 EXISTING WATER HEATER ON PLATFORM TO BE REMOVED COMPLETE AND ALL REMAINING SUPPLY PIPING ABOVE FLOOR TO BE REMOVED

DP3 EXISTING GAS METER TO BE REMOVED. COORDINATE WITH UTILITY COMPANY

DP4 EXISTING WATER SUPPLY TO BUILDING TO BE CAPPED. EXACT LOCATION UNKNOWN

DP5 EXISTING FLOOR DRAIN TO BE REMOVED AND EXISTING WASTE LINE TO BE CAPPED BELOW SLAB

E1 EXISTING CMU WALL FOUNDATION WITH WALL ALREADY REMOVED. SEE SLAB PREPARATION NOTES ON SHEET A0.1 SLAB PREPARATION PLAN

E2 EXISTING CMU WALL FOUNDATION WITH WALL ALREADY REMOVED WITH DEEP VOIDS IN CMU CELLS. SEE SLAB PREPARATION NOTES ON SHEET A0.1 SLAB PREPARATION PLAN

E5 EXISTING ELECTRICAL PANELS - SEE ELECTRICAL DRAWINGS

BOUDREAU

inspired design

803.799.0247 p
BoudreauGroup.com

1519 Sumter Street
Columbia, SC 29201

UNIVERSITY OF SOUTH CAROLINA

UNION - NURSING PROGRAM

UPGRADES

410 E. MAIN ST.
UNION, SC 29379
STATE PROJECT NO. H40-9528/5003415-3

Project Number
U-971-20-1

Date
02/02/21

Description
ADDITIONAL NO. 2

No.

1

2

3

4

5

6

7

8

9

10

11

12

13

14

15

16

17

18

19

20

21

22

23

24

25

26

27

28

29

30

31

32

33

34

35

36

37

38

39

40

41

42

43

44

45

46

47

48

49

50

51

52

53

54

55

56

57

58

59

60

61

62

63

64

65

66

67

68

69

70

71

72

73

74

75

76

77

78

79

80

81

82

83

84

85

86

87

88

89

90

91

92

93

94

95

96

97

98

99

100

101

102

103

104

105

106

107

108

109

110

111

112

113

114

115

116

117

118

119

120

121

122

123

124

125

126

127

128

129

130

131

132

133

134

135

136

137

138

139

140

141

142

143

144

145

146

147

148

149

150

151

152

153

154

155

156

157

158

159

160

161

162

163

164

165

166

167

168

169

170

171

172

173

174

175

176

177

178

179

180

181

182

183

184

185

186

187

188

189

190

191

192

193

194

195

196

197

198

199

200

201

202

203

204

205

206

207

208

209

210

211

212

213

214

215

216

217

218

219

220

221

222

223

224

225

226

227

228

229

230

231

232

233

234

235

236

237

238

239

240

241

242

243

244

245

246

247

248

249

250

251

252

253

254

255

256

257

258

259

260

261

262

263

264

265

266

267

268

269

270

271

272

273

274

275

276

277

278

279

280

281

282

283

284

285

286

287

288

289

290

291

292

293

294

295

296

297

298

299

300

301

302

303

304

305

306

307

308

309

310

311

312

313

314

315

316

317

318

319

320

321

322

323

324

325

326

327

328

329

330

331

332

333

334

335

336

337

338

339

340

341

342

343

344

345

346

347

348

349

350

351

352

353

354

355

356

357

358

359

360

361

362

363

364

365

366

367

368

369

370

371

372

373

374

375

376

377

378

379

380

381

382

383

384

385

386

387

388

389

390

391

392

393

394

395

396

397

398

399

400

401

402

403

404

405

406

407

408

409

410

411

412

413

414

415

416

417

418

419

420

421

422

423

424

425

426

427

428

429

430

431

432

433

434

435

436

437

438

439

440

441

442

443

444

445

446

447

448

449

450

451

452

453

454

455

456

457

458

459

460

461

462

463

464

465

466

467

468

469

470

471

472

473

474

475

476

477

478

479

480

481

482

483

484

485

486

487

488

489

490

491

492

493

494

495

496

497

498

499

500

501

502

503

504

505

506

507

508

509

510

511

512

513

514

515

516

517

518

519

520

521

522

523

524

525

526

527

528

529

530

531

532

533

534

535

536

537

538

539

540

541

542

543

544

545

546

547

548

549

550

551

552

553

554

555

556

557

558

559

560

561

562

563

564

565

566

567

568

569

570

571

572

573

574

575

576

577

578

579

580

581

582

583

584

585

586

587

588

589

590

591

592

593

594

595

596

597

598

599

600

601

602

603

604

605

606

607

608

609

610

611

612

613

614

615

616

617

618

619

620

621

622

623

624

625

626

627

628

629

630

631

632

633

634

635

636

637

638

639

640

641

642

643

644

645

646

647

648

649

650

651

652

653

654

655

656

657

658

659

660

661

662

663

664

665

666

667

668

669

670

671

672

673

674

675

676

677

678

679

680

681

682

683

684

685

686

687

688

689

690

691

692

693

694

695

696

697

698

699

700

701

702

703

704

705

706

707

708

709

710

711

712

713

714

715

716

717

718

719

720

721

722

723

724

725

726

727

728

729

730

731

732

733

734

735

736

737

738

739

740

741

742

743

744

745

746

747

748

749

750

751

752

753

754

755

756

757

758

759

760

761

762

763

764

765

766

767

768

769

770

771

772

773

774

775

776

777

778

779

780

781

782

783

784

785

786

787

788

789

790

791

792

793

794

795

796

797

798

799

800

801

802

803

804

805

806

807

808

809

810

811

812

813

814

815

816

817

818

819

820

821

822

823

824

825

826

827

828

829

830

831

832

833

834

835

836

837

838

839

840

841

842

843

844

845

846

847

848

849

850

851

852

853

854

855

856

857

858

859

860

861

862

863

864

865

866

867

868

869

870

871

872

873

874

875

876

877

878

879

880

881

882

883

884

885

886

887

888

889

890

891

892

893

894

895

896

897

898

899

900

901

902

903

904

905

906

907

908

909

910

911

912

913

914

915

916

917

918

919

920

921

922

923

924

925

926

927

928

929

930

931

932

933

934

935

936

937

938

939

940

941

942

943

944

945

946

947

948

949

950

951

952

953

954

955

956

957

958

959

960

961

962

963

964

965

966

967

968

969

970

971

972

973

974

975

976

977

978

979

980

981

982

983

984

985

986

987

988

989

990

991

992

993

994

995

996

997

998

999

1000

Author

Checked By

Checker

01.10.2021

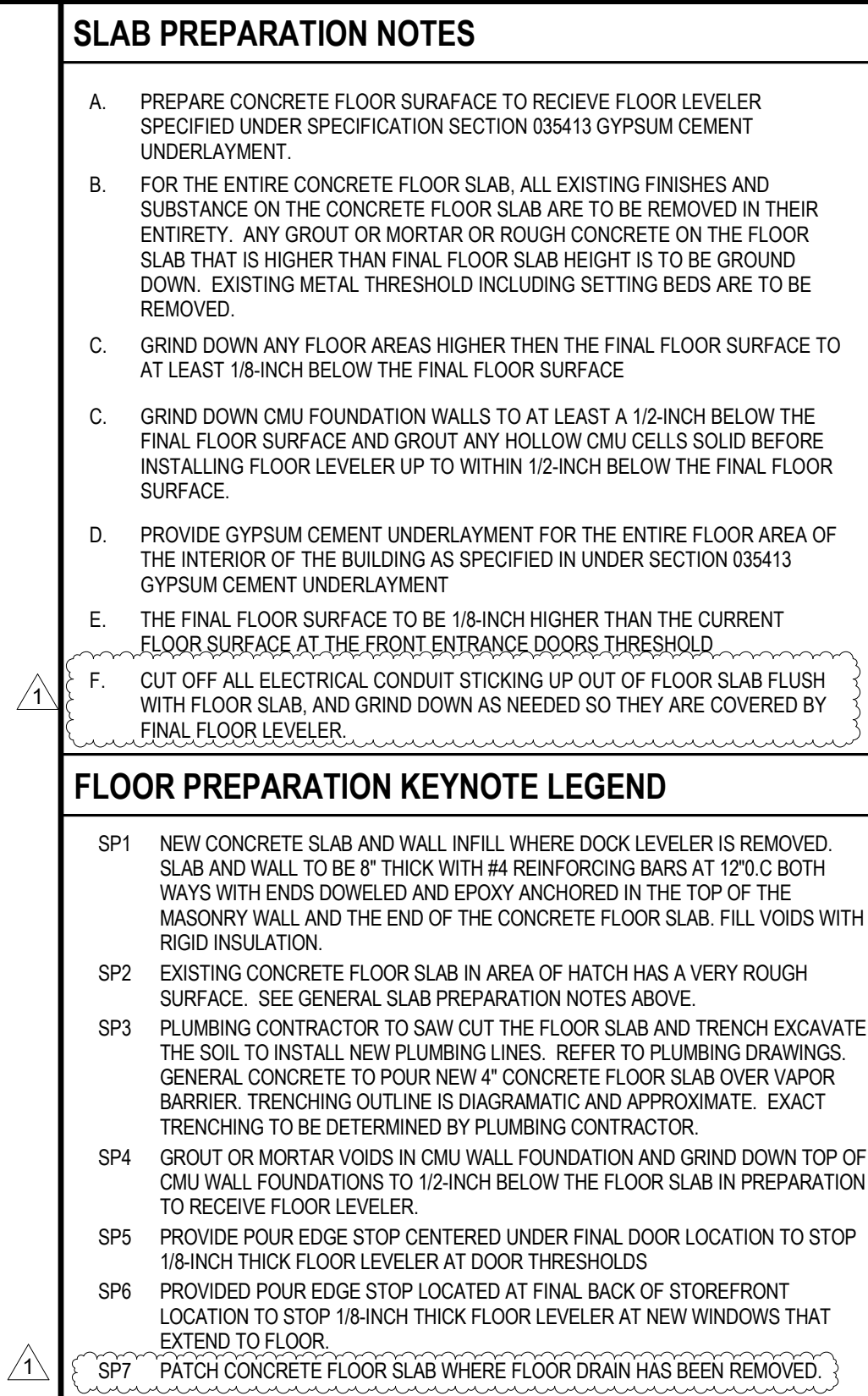
This drawing and the design information contained herein are the property of Boudreau Group, Inc. No part of this drawing may be reproduced or transmitted in any form or by any means electronic or mechanical, including photocopying, recording, or by any information storage and retrieval system, without the written consent of Boudreau Group, Inc.

Drawing Title

DEMOLITION FLOOR PLAN

Drawing No.

D1.1



UNIVERSITY OF SOUTH CAROLINA
UNION - NURSING PROGRAM
UPGRADES
4410 E. MAIN ST.
UNION, SC 29377
STATE PROJECT NO. H40-9528/60003415-3

Drawing Title.

SLAB PREPARATION PLAN

Drawing No.

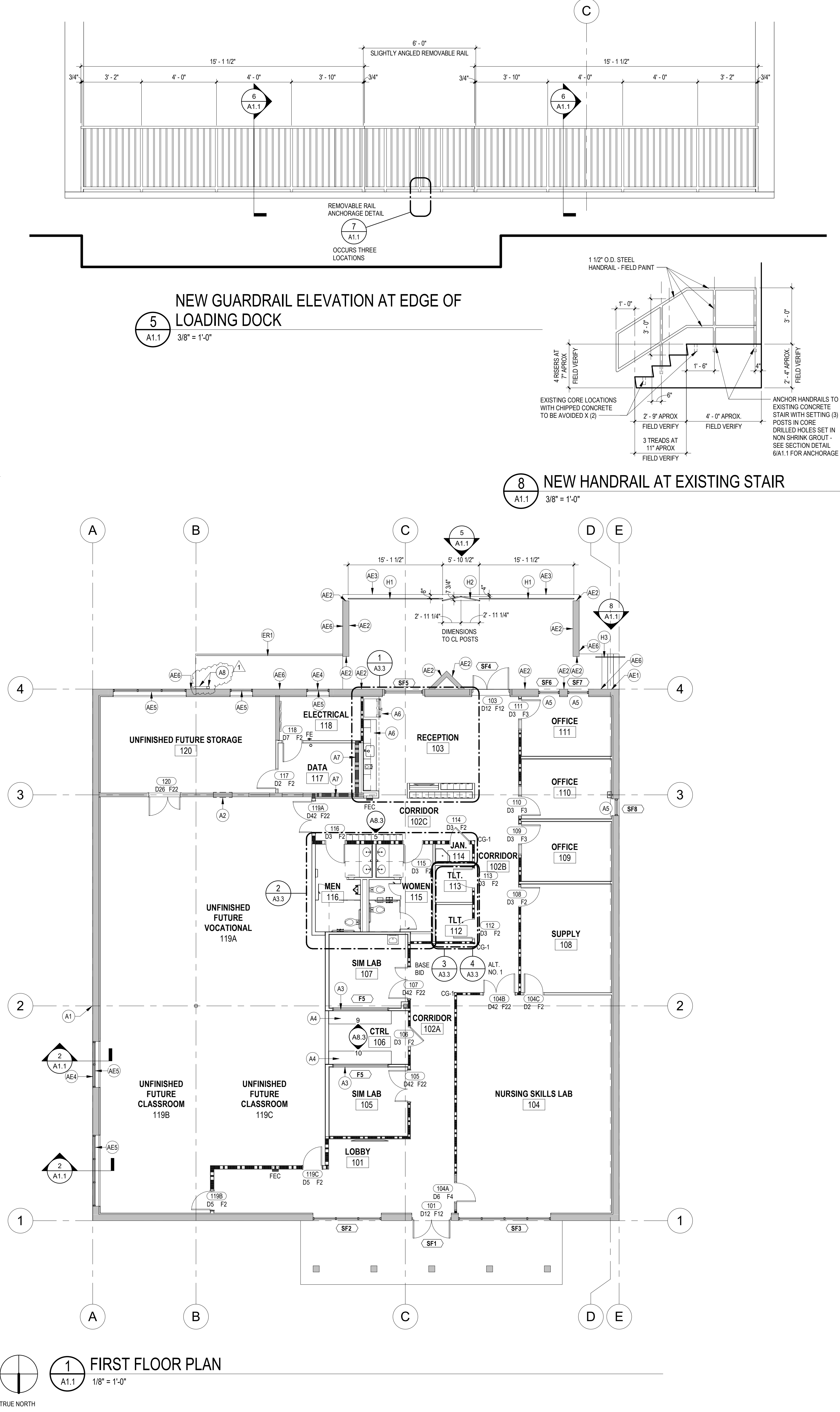
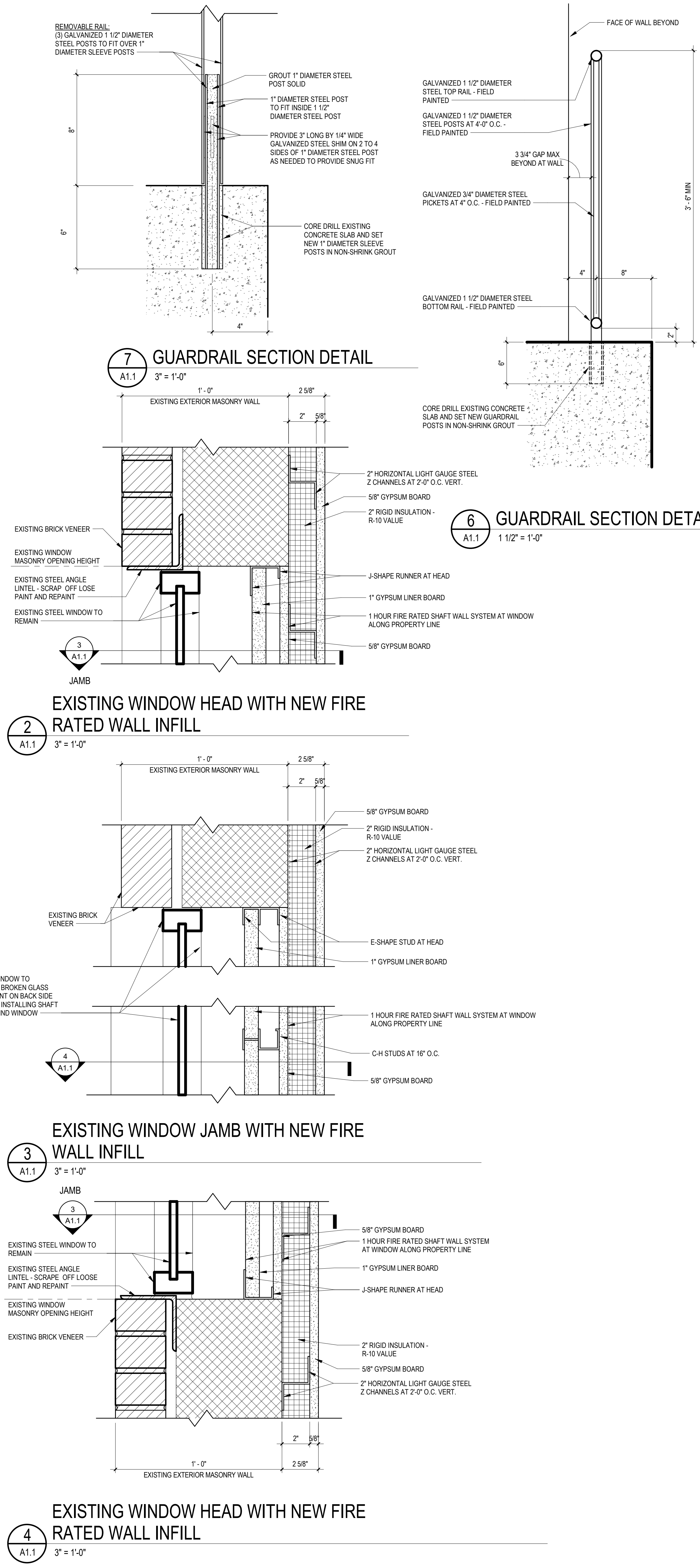
A0.1

BOUDREAU
inspired design

1519 Sumter Street
Columbia, SC 29201

803.799.0247 p
BoudreauxGroup.com

Seal



GENERAL NOTES - FLOOR PLAN			
A. SEE FLOOR PLAN KEYNOTES AND LEGEND FOR SPECIFIC REQUIREMENTS.			
B. REFER TO SHEET A1.10 FOR DIMENSIONS AND PARTITION TYPES			
C. REFER TO SHEET A3.1 FOR INTERIOR PARTITION TYPES INDICATED ON FLOOR PLANS.			
D. REFER TO SHEET A3.1 FOR ENLARGED PLANS.			
E. SEE REFLECTED CEILING PLANS (A2.X SERIES) FOR 1/4" = 1'-0" REFLECTED CEILING PLANS.			
F. SEE LIFE SAFETY PLANS (A.X.X SERIES) FOR CODE REQUIRED TACTILE SIGNS.			
G. REFER TO SHEET A0.1 - SLAB PREPARATION PLAN FOR SLAB PREPARATION WORK TO OCCUR BEFORE NEW CONSTRUCTION			
FLOOR PLAN LEGEND			
	EXISTING WALL TO REMAIN		
	INTERIOR PARTITION, SEE PARTITION TYPES AND DETAILS		
	1 HOUR FIRE RESISTANCE RATED INTERIOR PARTITION, SEE PARTITION TYPES AND DETAILS		
	LINE OF OBJECT ABOVE		
	FIRE EXTINGUISHER CABINET, SEMI-RECESSED WITH FIRE EXTINGUISHER REFER TO DRAWINGS A3.2 FOR DETAIL		
	FIRE EXTINGUISHER, BRACKET MOUNTED		
	FIRE RATED CORNER GUARD REFER PART DETAIL 5/13.2 AND SPECIFICATION SECTION 102800 - WALL SURFACE PROTECTION SYSTEMS		
FLOOR PLAN KEYNOTE LEGEND			
A1	AT EXISTING HOLE IN WALL ABOVE EXISTING CEILING LINE, FILL HOLE WITH SHEET METAL ANCHORED TO THE MASONRY WALL, AND SEAL PERIMETER OF SHEET METAL WITH SEALANT ON ALL FOUR SIDES AND PAINT SHEET METAL TO MATCH THE EXISTING EXTERIOR PAINT ON THE BUILDING.		
A2	APPROXIMATE 32"x32" HOLE IN CMU WALL DOWN LOW. SAW CUT EDGES OF CMU TO CLEAN UP ROUGH EDGES ON ALL FOUR SIDES AND PROVIDE WALL IN FILL PARTITION TYPE SE-20 ON BOTH SIDES OF WALL.		
A3	HOLLOW METAL INTERIOR WINDOW WITH ONE-WAY (ALSO KNOWN AS TWO-WAY) MIRROR GLASS. SEE HOLLOW METAL WINDOW FRAME TYPE F5.		
A4	OBSERVATION COUNTERTOP REFER INTERIOR ELEVATIONS REFERENCED FOR REFERENCE TO DETAILS.		
A5	PROVIDE WINDOW SLIDS AT THESE OFFICE WINDOWS. REFER TO THE FINISH SCHEDULE AND DRAWING A8.0.		
A6	OWNER FURNISHED CONTRACTOR INSTALLED APPLIANCES. SEE INTERIOR ELEVATIONS REFERENCE TO ENLARGED FLOOR PLAN.		
A7	CONTINUE TOP OF CMU WALL TO UNDERSIDE OF METAL ROOF DECK WITH PARTITION TYPE SC-30 ONE-HOUR FIRE RATED. SEAL TOP OF WALL IN ACCORDANCE WITH DETAIL 2/13.2. PROVIDE PARTITION TYPE SC-30 ONE-HOUR FIRE RATED TO FILL ANY OPENINGS IN THE CMU WALL.		
A8	PROVIDE NEW ALUMINUM DOWN LEADER FROM HEIGHT OF EXISTING CANOPY REMOVED DOWN TO GROUND AND TO RUN ALONG SLOPE OF RAMP TO BOTTOM OF RAMP TO DISCHARGE.		
AE1	PAINT BRICK VENEER AT SPOT WHERE PAINT IS MISSING		
AE2	PAINT ENTIRE FACE OF BRICK VENEER UP TO THE UNDERSIDE OF THE EXISTING CANOPY OVER THE LOADING DOCK. PAINT COLOR TO MATCH THE EXISTING.		
AE3	PAINT FACE OF BRICK VENEER AT LOADING DOCK WHERE BUMPERS ARE REMOVED. PAINT COLOR TO MATCH THE EXISTING.		
AE4	REPLACE BROKEN GLASS AT EXISTING WINDOW TO REMAIN.		
AE5	RE-PAINT (TOUCH UP PAINT ON) BACK SIDE OF GLASS AT EXISTING WINDOW TO REMAIN. PAINT COLOR TO MATCH THE EXISTING.		
AE6	TOUCH UP PAINT ON EXTERIOR BRICK VENEER WHERE CANOPY WAS REMOVED FOR FULL LENGTH OF CANOPY THAT WAS REMOVED - PAINT COLOR TO MATCH EXISTING.		
ER1	EXISTING HANDRAIL ALONG RAMP TO REMAIN. REMOVE LOOSE PAINT AND PAINT TO MATCH NEW RAILS		
H1	NEW STEEL PIPE GUARDRAIL WITH POSTS AT 4'-0" O.C. ANCHORED INTO TO EXISTING CONCRETE LOADING DOCK SLAB - SEE ELEVATIONS AND SECTIONS REFERENCED.		
H2	NEW STEEL PIPE REMOVABLE GUARDRAIL WITH 3 POSTS WITH SLIGHT ANGLE FOR STABILITY TO TO SLIDE OVER POST ANCHORED TO EXISTING CONCRETE LOADING DOCK SLAB - SEE ELEVATIONS AND SECTIONS REFERENCED.		
H3	NEW STEEL PIPE HANDRAIL ANCHORED TO EXISTING CONCRETE STAIR - SEE ELEVATION AND SECTION REFERENCED.		

BOUDREAU
inspired design

803.799.0247 p
BoudreauGroup.com

1519 Sumter Street
Columbia, SC 29201

STATE OF SOUTH CAROLINA
The Boudreau Group, Inc.
Columbia, South Carolina
8-77010
REGISTERED ARCHITECT

STATE OF SOUTH CAROLINA
BOUDREAU
01.18.21
REGISTERED ARCHITECT

UNIVERSITY OF SOUTH CAROLINA
UNION - NURSING PROGRAM
UPGRADES
410 E. MAIN ST.
UNION, SC 29379
STATE PROJECT NO. 140-9528/50003415-3

Project Number
U-971-20-1

Date
02/03/21

Drawn By
Author

Checked By
Checker

01/13/2021

This drawing and the design information contained herein are the property of The Boudreau Group, Inc. No reproduction, in whole or in part, without the written consent of The Boudreau Group, Inc. is permitted.

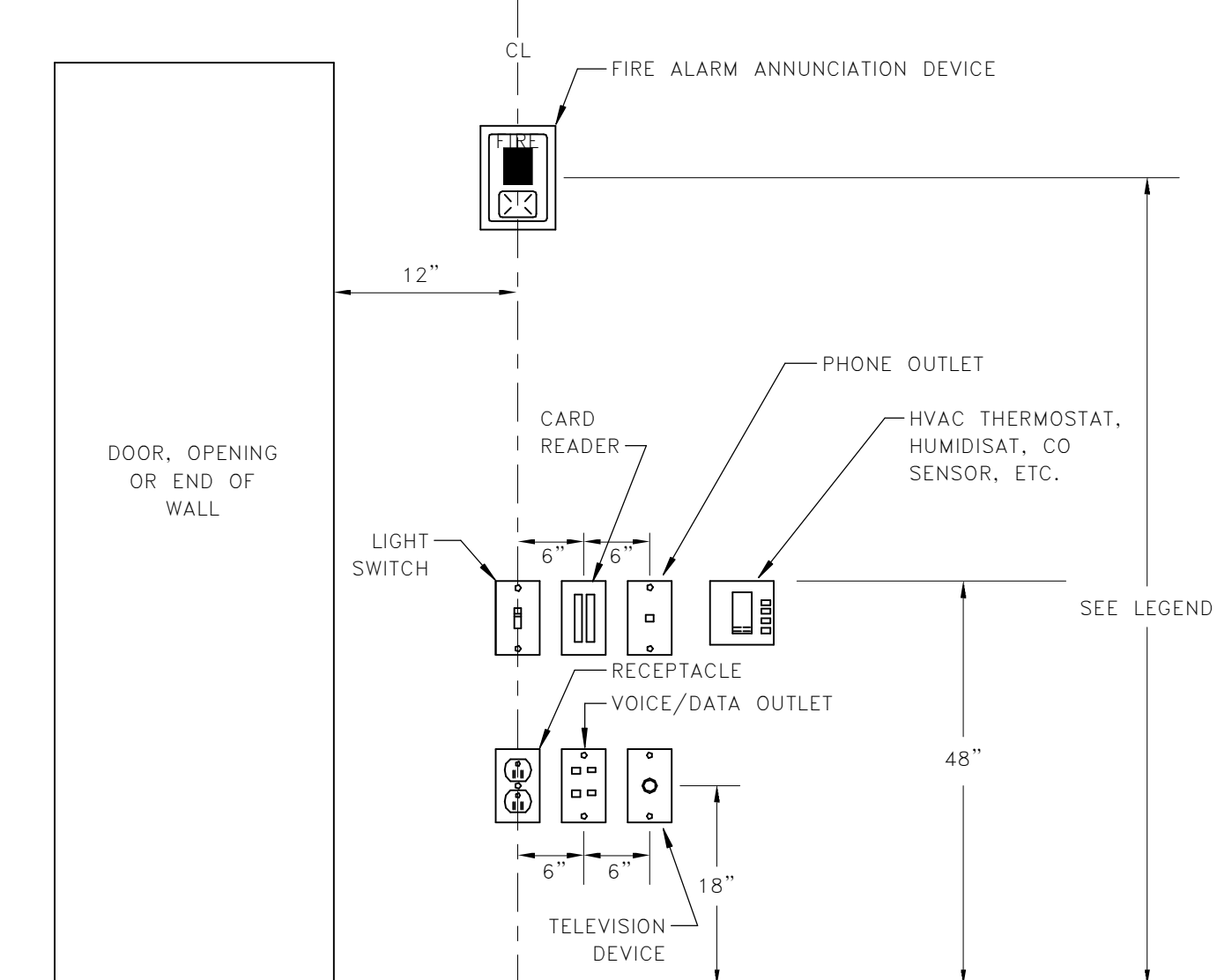
Drawing Title.
FIRST FLOOR PLAN, FIRE RATED WINDOW DETAILS, GUARDRAILS AND HANDRAILS

Drawing No.
A1.1

EQUIPMENT CONNECTION SCHEDULE										
UNIT I.D.	CONNECTION DESCRIPTION	ELECTRICAL SUMMARY			DISCONNECT SUMMARY					NOTES
		VOLTAGE	# OF POLES	LOAD (VA)	PROVIDED BY	DISC. TYPE	DISC. RATING	TRIP / FUSE	NEMA RATING	
DAHU-1	DUCTLESS AHU	208 V	2	0	—	—	—	—	—	1,3
EF-1	CEILING EXHAUST FAN	115 V	1	128	M	—	—	—	—	2
EF-2	CEILING EXHAUST FAN	115 V	1	128	M	—	—	—	—	2
EF-3	CEILING EXHAUST FAN	115 V	1	128	M	—	—	—	—	2
EF-4	CEILING EXHAUST FAN	115 V	1	128	M	—	—	—	—	2,4
EF-5	CEILING EXHAUST FAN	115 V	1	128	M	—	—	—	—	2
RTH-1	ROOF TOP HEAT PUMP	208 V	3	15130	M	—	—	—	—	2
RTU-2	ROOF TOP HEAT PUMP	208 V	3	15130	M	—	—	—	—	2
RTU-3	ROOF TOP HEAT PUMP	208 V	3	15130	M	—	—	—	—	2
SWP-1	SPLIT HEAT PUMP	208 V	2	3952	E	F	30 A	25	3R	1
VF-1	CEILING EXHAUST FAN	115 V	1	126	M	—	—	—	—	2
WH-1	WATER HEATER	208 V	2	4500	E	NF	30 A	—	1	1

- EQUIPMENT CONNECTION SCHEDULE NOTES**
- ALL SWITCHES SHALL BE GENERAL DUTY TYPE, FUSIBLE UNLESS NOTED WITH "NF" (NON-FUSIBLE).
 - "M" DENOTES DISCONNECT SWITCH INTEGRAL WITH MECHANICAL EQUIPMENT.
 - INDOOR UNIT RECEIVES POWER AND COMMUNICATION FROM OUTDOOR UNIT THROUGH FIELD SUPPLIED INTERCONNECTED WIRING BY ELECTRICAL CONTRACTOR.
 - FAN TO BE INSTALLED UNDER ADD ALTERNATE NO. 1.

LIGHTING FIXTURE PRIOR APPROVED SCHEDULE					
TYPE	MANUFACTURER	CAT #	MANUFACTURER	CAT #	MANUFACTURER
AZ	JADEMAR LIGHTING	JFP22-30W-35K-D	DAY-BRITE	2FXP-38B-835-2-DS-UNV-DIM	
AZE	JADEMAR LIGHTING	JFP22-30W-35K-D-EM15	DAY-BRITE	2FXP-38B-835-2-DS-UNV-DIM-BSL10LST	
A4	JADEMAR LIGHTING	JFP24-36W-HE-35K-D	DAY-BRITE	2FXP-43L-835-4-DS-UNV-DIM	
A4E	JADEMAR LIGHTING	JFP24-36W-HE-35K-D-EM15	DAY-BRITE	2FXP-43L-835-4-DS-UNV-DIM-BSL10LST	
D	HE WILLIAMS	4PR-L15/935-DIMLINE-120-LW-OF-WH-N-F1	VANTAGE	V40FCRDU-15-35K-F4060-WHT-HCR	
DE	HE WILLIAMS	4PR-L15/935-EM/7W-DIMLINE-120-LW-OF-WH-N-F1	VANTAGE	V40FCRDU-15-35K-F4060-WHT-HCR-REM	
DR	HE WILLIAMS	4PR-L15/935-DIMLINE-120-LW-OF-WH-N-F1	VANTAGE	V40FCRDU-15-35K-F4060-WHT-HCR	
DRE	HE WILLIAMS	4PR-L15/935-EM/7W-DIMLINE-120-LW-OF-WH-N-F1	VANTAGE	V40FCRDU-15-35K-F4060-WHT-HCR-REM	
J4P	HE WILLIAMS	75R-4-L50/835-DIM-UNV	MERCURY	LW4-4-5000-35K-HTA-1%-UNI	
J4PE	HE WILLIAMS	75R-4-L50/835-EM/1-WLP-DIM-UNV	MERCURY	LW4-4-5000-35K-HTA-1%-UNI-EM10	
J4WE	HE WILLIAMS	75R-4-L50/835-EM/1-WLP-DIM-UNV	MERCURY	LW4-4-5000-35K-HTA-1%-UNI-EM10	
JV2	MODERN FORMS	WS-47925	SONNEMAN	2543.01	
JV6	MODERN FORMS	WS-47949	SONNEMAN	2545.01	
P	PATHWAY LIGHTING	C73A41535MDOB	NORA	NYLM-3C-35X-FINISH-LE4	
PF	MODERN FORMS	FR-W1801-60L-MB-MB	MODERN FORMS	FR-W1801-60L-MB-MB	
RE	BROWNLEE	7027-D30-35K-BBC	GARDCO	104L-16L-530-WW-G1-2-EBPC-UNV-FINISH	
W	BROWNLEE	7027-C37-35K	GARDCO	104L-16L-1000-WW-G1-2-EBPC-UNV-FINISH	
X1	EMERGILITE	ELXN400	EXITRONIX	ILX-R-EM-WH	
X2	EMERGILITE	ELXN400	EXITRONIX	ILX-R-EM-WH	



- NOTE:**
- DEVICES SHOWN WITHIN 48" OF EACH OTHER ON ALL ELECTRICAL PLANS SHALL BE ALIGNED PER THIS DETAIL. IF DEVICES ARE SHOWN IN MIDDLE OF WALL, THEN CENTER DEVICES ON WALL.
 - DEVICES ABOVE COUNTER SHALL BE MAXIMUM OF 44" TO TOP OF DEVICE. SEE ELEVATIONS FOR ADDITIONAL INFORMATION.

1 **DEVICE ALIGNMENT DETAIL**
E0.2 NOT TO SCALE

LIGHT FIXTURE SCHEDULE										
SYMBOL	FIXTURE SPECIFICATIONS			LAMPING		ELECTRICAL		MOUNTING	REMARKS	NOTES
	TYPE	FIXTURE DESCRIPTION	MANUFACTURER	CAT. #	LUMENS	LAMP TYPE	FIXT. LOAD			
A2	2x2 EDGE - LIT FLAT PANEL	COLUMBIA LIGHTING	CP22-40/33/2835	3300	835 LED	26	120 V	RECESSED GRID	1,2,3,4	
A2E	SAME AS "A2" WITH EMERGENCY BATTERY PACK	COLUMBIA LIGHTING	CP22-40/33/2835-ELL14	3300	835 LED	26	120 V	RECESSED GRID	1,2,3,4	
A4	2x4 EDGE - LIT FLAT PANEL	COLUMBIA LIGHTING	CP24-4135-HE	4100	835 LED	32	120 V	RECESSED GRID	1,2,3,4	
A4E	SAME AS "A4" WITH EMERGENCY BATTERY PACK	COLUMBIA LIGHTING	CP24-4135-HE-ELL14	4100	835 LED	32	120 V	RECESSED GRID	1,2,3,4	
D	DOWNLIGHT	INTENSE LIGHTING	LD4NCL2DWM-LD4DR359W-SF	1500	935 LED	17	120 V	RECESSED GRID	1,2,3,4	
DE	SAME AS "D" WITH EMERGENCY BATTERY PACK	INTENSE LIGHTING	LD4NCL2DWMEM7-LD4DR359W-SF	1500	935 LED	17	120 V	RECESSED GRID	1,2,3,4	
DR	DOWNLIGHT	INTENSE LIGHTING	LD4NCL2DWM-LD4DR359W-SF	1500	935 LED	17	120 V	RECESSED	1,2,3,4	
DRE	SAME AS "DR" WITH EMERGENCY BATTERY PACK	INTENSE LIGHTING	LD4NCL2DWMEM7-LD4DR359W-SF	1500	935 LED	17	120 V	RECESSED	1,2,3,4	
J4P	LINEAR PENDANT	COLUMBIA LIGHTING	MPS4-35ML-CW-EU	4800	835 LED	40	120 V	PENDANT MOUNTED AT 10' AFF	1,2,3,4	
J4PE	SAME AS "J4P" WITH EMERGENCY BATTERY PACK	COLUMBIA LIGHTING	MPS4-35ML-CW-EU	4800	835 LED	40	120 V	PENDANT MOUNTED AT 10' AFF	1,2,3,4	
J4WE	MULTIPURPOSE LINEAR WALL WITH EMERGENCY BATTERY PACK	COLUMBIA LIGHTING	MPS4-35ML-CW-EU-ELL14	4800	LED	40	120 V	WALL MOUNTED	1,2,3,4	
JV2	LED BATH & INTERIOR SCIENCE VANITY FIXTURE LIGHTING	MODERN FORMS	WS-47925	1708	LED	22	120 V	WALL MOUNTED	1,2,3,4	
JV6	LED BATH & INTERIOR SCIENCE VANITY FIXTURE LIGHTING	MODERN FORMS	WS-47949	3171	LED	44	120 V	WALL MOUNTED	1,2,3,4	
P	CYLINDER	SPECTRUM LIGHTING	CQ205XT 13L35K MDEX/RDC5CM36/BCMB	1300	935 LED	13	120 V	PENDANT MOUNTED AT 9' AFF MEASURED TO BOTTOM OF FIXTURE	1,2,3,4	
FF	60" CEILING FAN SMART FAN	MODERN FORMS	FR-W1801-60L-MB-MB	1600	935 LED	55	120 V	CEILING PENDANT MOUNTED 12"-6" AFF MEASURED TO BOTTOM OF FAN	1,2,3	
RE	ARCHITECTURAL WALL PACK	HUBBELL	RD11-12L30-3K7-2-UNV-DBT	2942	830 LED	30	120 V	SURFACE MOUNTED AT APPROXIMATELY 17'-6" AFF	1,2,5	
W	ARCHITECTURAL WALL PACK	HUBBELL	RD12-24L50-3K8-2-UNV-DBT	5200	830 LED	50	120 V	WALL	1,2,3	
X1	EXIT SIGN, SINGLE-FACE LED EMERGENCY EXIT	COMPASS LIGHTING	CER	—	LED	3	120 V	CEILING	1,2,3,4	
X2	EXIT SIGN, SINGLE-FACE LED EMERGENCY EXIT	COMPASS LIGHTING	CER	—	LED	6	120 V	WALL MOUNTED	1,2,3,4	

LIGHT FIXTURE TYPES 'A2R', 'A2RE', AND 'R' ARE DELETED FROM LIGHT FIXTURE SCHEDULE.

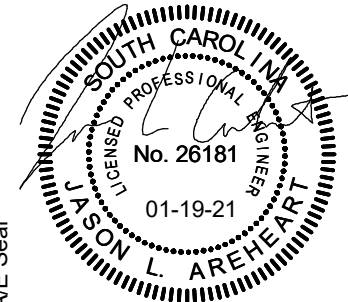
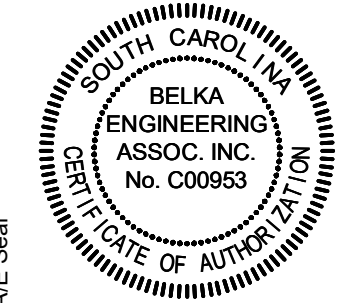
- LIGHT FIXTURE SCHEDULE NOTES**
- LUMENS LISTED IN SCHEDULE REPRESENT DELIVERED LUMENS OF FIXTURES.
 - THREE DIGIT NUMBERS LISTED IN LAMP COLUMN REPRESENT CRI AND COLOR TEMPERATURE. FIRST DIGIT INDICATES MINIMUM CRI AND LAST TWO DIGITS INDICATE COLOR TEMPERATURE. EXAMPLE: 830 INDICATES MINIMUM CRI OF 80 AND A COLOR TEMPERATURE OF 3000K.
 - SEE ARCHITECTURAL RCP AND ELEVATIONS FOR EXACT LOCATION AND MOUNTING HEIGHTS.
 - CONFIRM QUANTITIES OF FIXTURES SHOWN IN RCP MATCH QUANTITIES SHOWN ON ELECTRICAL PLANS PRIOR TO BID. IF NO DISCREPANCIES ARE NOTED PRIOR TO BID THE HIGHEST QUANTITY OF EACH FIXTURE TYPE SHOWN SHALL BE PROVIDED.

LIGHTING CONTROL SCHEME LEGEND									
MARK	MANUAL / WALL STATION(S)	MULTI-LEVEL SWITCHED/ZONED	OCCUPANCY SENSOR	VACANCY SENSOR	SCHEDULED AUTO-ON	SCHEDULED AUTO-OFF	DAYLIGHT CONTROL ON / OFF	DAYLIGHT DIMMED	PLUGLOAD CONTROL
1	Yes	No	No	No	No	No	No	No	No
2	Yes	No	No	Yes	No	No	No	No	No
3	No	No	Yes	No	No	No	No	No	No
4	Yes	No	Yes	No	No	No	No	No	No

SYMBOL SHOWN ON PLAN (TYP.)

- LIGHTING CONTROL SCHEME NOTES**
- MANUAL WALL SWITCH SHALL BE PART OF THE LIGHTING CONTROLS. REFER TO PLANS FOR MANUAL WALL STATION LOCATION(S) IN EACH SPACE.
 - NO AUTOMATIC CONTROL SHALL BE UTILIZED IN THIS SPACE FOR SAFETY CONCERNS. LIGHTING SHALL BE ROUTED THROUGH LIGHTING CONTROL SYSTEM FOR MONITORING PURPOSES ONLY.
 - ROOMS WITH DIMMING TYPE SWITCHES SHOWN IN PLAN WILL REQUIRE DIMMING CONTROL
 - SET DELAYS FOR ALL OCCUPANCY AND VACANCY SENSORS TO 20-MINS.

BOUDREAU
inspired design



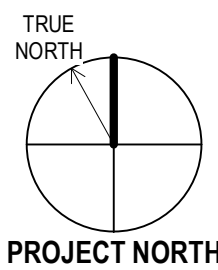
UNIVERSITY OF SOUTH CAROLINA
UNION - NURSING PROGRAM
UPGRADES
410 E. MAIN ST.
UNION, SC 29379
STATE PROJECT NO. HQ-9528/95003415-3

No.	Description	Date	Project Number
1	Interim No. 2	10/20/2020	LS971-20-1
			Drawn By
			Checked By
			Date

LIGHTING & EQUIPMENT SCHEDULES

Drawing No.

E0.2

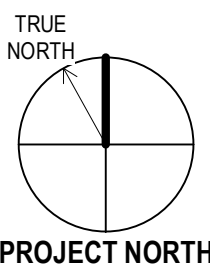


BELKA
ENGINEERING ASSOCIATES
2519A PLATT SPRINGS ROAD | WEST COLUMBIA, SC
(803) 731-8550 Office | (803) 360-6445 Cell
CONTACT: CLIFF STRINGFIELD
CSTRINGFIELD@BEA-Consulting.com

PANELBOARD: MP				DISTRIBUTION: 120/208 Wye					A.I.C. RATING: 22,000				
SUPPLIED FROM: UTILITY POLE-MOUNT TRANSFORMERS				PHASES: 3					MAINS RATING: 600 A				
MOUNTING: SURFACE				WIRES: 4					MCB RATING: 500 A				
				ENCLOSURE: Type 1									
WIRE SIZE	CKT	DESCRIPTION	BKR	P	A	B	C	P	BKR	DESCRIPTION	CKT	WIRE SIZE	
3-gal, 1-gal, 1-gal	1	RTU-1	50	3	5.0	5.0			3	RTU-2	2	2-gal, 1-gal, 1-gal	
	3					5.0	5.0	4					
	5						5.0	5.0			6		
	7				5.0	2.0					8		
3-gal, 1-gal, 1-gal	9	RTU-3	50	3		5.0	2.0	2	25	SHP-1	10	2-gal, 1-gal, 1-gal	
	11						5.0				8.0		12
2-gal, 1-gal, 1-gal	13	WH-1	30	2	2.3	8.5		3	225	PANEL 'L1'	14	**	
	15					2.3	7.4				16		
3-gal, 1-gal, 1-gal	17	***SPD	40	3	0.0	0.0		1	20	SPARE	18	---	
	19						0.0	0.0	1	20	SPARE	20	
---	21				0.0	0.0		1	20	SPARE	22	---	
---	23	SPARE	20	1			0.0	0.0	---	PREPARED SPACE	24	---	
---	25	SPARE	20	1	0.0	0.0		---	---	PREPARED SPACE	26	---	
---	27	SPARE	20	1		0.0	0.0	---	---	PREPARED SPACE	28	---	
---	29	PREPARED SPACE	---	---				0.0	0.0	---	PREPARED SPACE	30	---
---	31	PREPARED SPACE	---	---	0.0	0.0		---	---	PREPARED SPACE	32	---	
---	33	PREPARED SPACE	---	---			0.0	0.0	---	---	PREPARED SPACE	34	---
---	35	PREPARED SPACE	---	---				0.0	0.0	---	PREPARED SPACE	36	---
---	37	PREPARED SPACE	---	---	0.0	0.0		---	---	PREPARED SPACE	38	---	
---	39	PREPARED SPACE	---	---		0.0	0.0	---	---	PREPARED SPACE	40	---	
---	41	PREPARED SPACE	---	---				0.0	0.0	---	PREPARED SPACE	42	---
TOTAL PER PHASE KVA:					27.9	26.8	23.2	CONNECTED KVA:					77.8
TOTAL PER PHASE AMPACITY:					237	228	193	CONNECTED AMPACITY:					216
NOTES:													
** COORDINATE FEEDER SIZE WITH SINGLE LINE DIAGRAM													
*** COORDINATE BREAKER SIZE AND CONDUCTOR SIZE WITH SPD MANUFACTURER													

CONDUIT SCHEDULE	
BRANCH CIRCUIT RATING	CONDUIT SIZE
20A-50A	3/4"
55A-80A	1"
85A-125A	1 1/4"
150A	1 1/2"
175A-200A	2"
225A-300A	2 1/2"
350A	3"
400A	3 1/2"

<div>PANELBOARD: LP</div> <div>SUPPLIED FROM: MP</div> <div>MOUNTING: SURFACE</div>				<div>DISTRIBUTION: 120/208 Wye</div> <div>PHASES: 3</div> <div>WIRES: 4</div> <div>ENCLOSURE: Type 1</div>										<div>A.I.C. RATING: 22,000</div> <div>MAINS RATING: 225 A</div> <div>MCB RATING: MAIN LUGS ONLY</div>			
WIRE SIZE	CKT	DESCRIPTION	BKR	P	A	B	C	P	BKR	DESCRIPTION	CKT	WIRE SIZE					
1-gal, 1-gal, 1-gal	1	LTG -- UNFINISHED 119, 120	20	1	0.7	0.6			1	LTG-LOBBY101,CORR.102A,102B,102C,RECEPT...	2	1-gal, 1-gal, 1-gal					
1-gal, 1-gal, 1-gal	3	LTG -- LAB 104,SUPPLY 108,OFFICES 109-111	20	1		0.7	0.7		1	LTG-LAB 105,107,CTRL 106,MEN116,WOMEN...	4	1-gal, 1-gal, 1-gal					
1-gal, 1-gal, 1-gal	5	LIGHTING-EXTERIOR	20	1			0.5	1.4	1	HEADWALL POWER -- NURSING SKILLS LAB 104	6	1-gal, 1-gal, 1-gal					
1-gal, 1-gal, 1-gal	7	RCPTS. -- OFFICES 110-111	20	1	1.4	1.3			1	RCPTS. -- OFFICE 109, SUPPLY 108, LAB 104	8	1-gal, 1-gal, 1-gal					
1-gal, 1-gal, 1-gal	9	RCPTS. -- NURSING SKILLS LAB 104	20	1		0.5	0.5		1	RCPTS. -- NURSING SKILLS LAB 104	10	1-gal, 1-gal, 1-gal					
1-gal, 1-gal, 1-gal	11	RCPT. -- REFRIGERATOR RECEPTION 103	20	1			1.0	1.0	1	RCPT. -- MICROWAVE RECEPTION 103	12	1-gal, 1-gal, 1-gal					
1-gal, 1-gal, 1-gal	13	RCPT. -- COFFEE MAKER RECEPTION 103	20	1	1.0	0.5			1	RCPTS. -- RECEPTION 103	14	1-gal, 1-gal, 1-gal					
1-gal, 1-gal, 1-gal	15	RCPTS.,HEADWALL-LAB 105,107,CTRL 106	20	1		1.4	1.6		1	RCPTS. -- EXTERIOR	16	1-gal, 1-gal, 1-gal					
1-gal, 1-gal, 1-gal	17	RCPTS. -- LOBBY 103,CORR.102A,102B,102C	20	1			0.7	0.7	1	RCPTS. -- UNFINISHED 120, CORR. 102C	18	1-gal, 1-gal, 1-gal					
1-gal, 1-gal, 1-gal	19	RCPTS. -- UNFINISHED 119	20	1	0.7	0.7			1	RCPTS. -- UNFINISHED 119	20	1-gal, 1-gal, 1-gal					
1-gal, 1-gal, 1-gal	21	RCPT. -- TV, LOBBY 101	20	1		1.0	1.1		1	RCPTS. -- MEN 116,WOMEN 115, CORR. 102C	22	1-gal, 1-gal, 1-gal					
1-gal, 1-gal, 1-gal	23	RCPTS. -- TLT. 112-113, JAN. 114	20	1			0.5	1.0	1	RCPT. -- TV, RECEPTION 103	24	1-gal, 1-gal, 1-gal					
1-gal, 1-gal, 1-gal	25	RCPT. -- DATA RM. 117	20	1	0.4	0.5			1	FACP	26	1-gal, 1-gal, 1-gal					
1-gal, 1-gal, 1-gal	27	MECHANICAL CONTROL PANEL	20	1		0.5	0.4		1	FIRE/SMOKE DAMPERS	28	1-gal, 1-gal, 1-gal					
1-gal, 1-gal, 1-gal	29	RCPT. -- DATA RM. 117	20	1			0.4	0.2	1	LIGHTING	30	1-gal, 1-gal, 1-gal					
1-gal, 1-gal, 1-gal	31	MEN 116, WOMEN 115 TOWEL DISPENSER	20	1	0.2	0.0			1	SPARE	32	---					
---	33	SPARE	20	1		0.0	0.0		1	SPARE	34	---					
---	35	SPARE	20	1			0.0	0.0	1	SPARE	36	---					
---	37	SPARE	20	1	0.0	0.0			1	SPARE	38	---					
---	39	SPARE	20	1		0.0	0.0		1	SPARE	40	---					
---	41	SPARE	20	1			0.0	0.0	1	SPARE	42	---					
---	43	SPARE	20	1	0.0	0.0			1	SPARE	44	---					
---	45	SPARE	20	1		0.0	0.0		1	SPARE	46	---					
---	47	SPARE	20	1			0.0	0.0	1	SPARE	48	---					
---	49	SPARE	20	1	0.0	0.0			1	SPARE	50	---					
---	51	SPARE	20	1		0.0	0.0		1	SPARE	52	---					
---	53	SPARE	20	1			0.0	0.0	1	SPARE	54	---					
---	55	SPARE	20	1	0.0	0.0			1	SPARE	56	---					
---	57	SPARE	20	1		0.0	0.0		1	SPARE	58	---					
---	59	SPARE	20	1			0.0	0.0	1	SPARE	60	---					
---	61	SPARE	20	1	0.0	0.0			1	SPARE	62	---					
---	63	SPARE	20	1		0.0	0.0		1	SPARE	64	---					
---	65	SPARE	20	1			0.0	0.0	1	SPARE	66	---					
---	67	SPARE	20	1	0.0	0.0			1	SPARE	68	---					
---	69	SPARE	20	1		0.0	0.0		1	SPARE	70	---					
---	71	SPARE	20	1			0.0	0.0	1	SPARE	72	---					
---	73	SPARE	20	1	0.0	0.0			1	SPARE	74	---					
---	75	SPARE	20	1		0.0	0.0		1	SPARE	76	---					
---	77	SPARE	20	1			0.0	0.0	1	SPARE	78	---					
---	79	PREPARED SPACE	---	---	0.0	0.0			---	PREPARED SPACE	80	---					
---	81	PREPARED SPACE	---	---		0.0	0.0		---	PREPARED SPACE	82	---					
---	83	PREPARED SPACE	---	---			0.0	0.0	---	PREPARED SPACE	84	---					
TOTAL PER PHASE KVA:					8.0	8.5	7.4	CONNECTED KVA: 24.0									
TOTAL PER PHASE AMPACITY:					68	72	62	CONNECTED AMPACITY: 67									
NOTES:																	

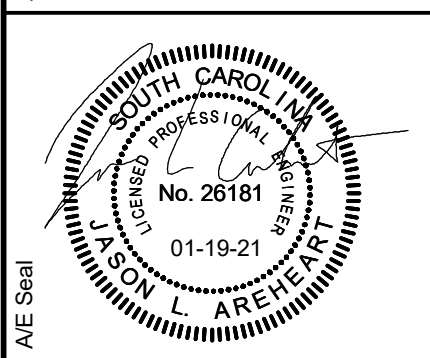
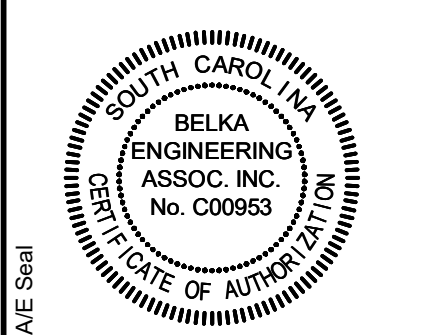


Drawing Title:
ELECTRICAL PANEL SCHEDULES

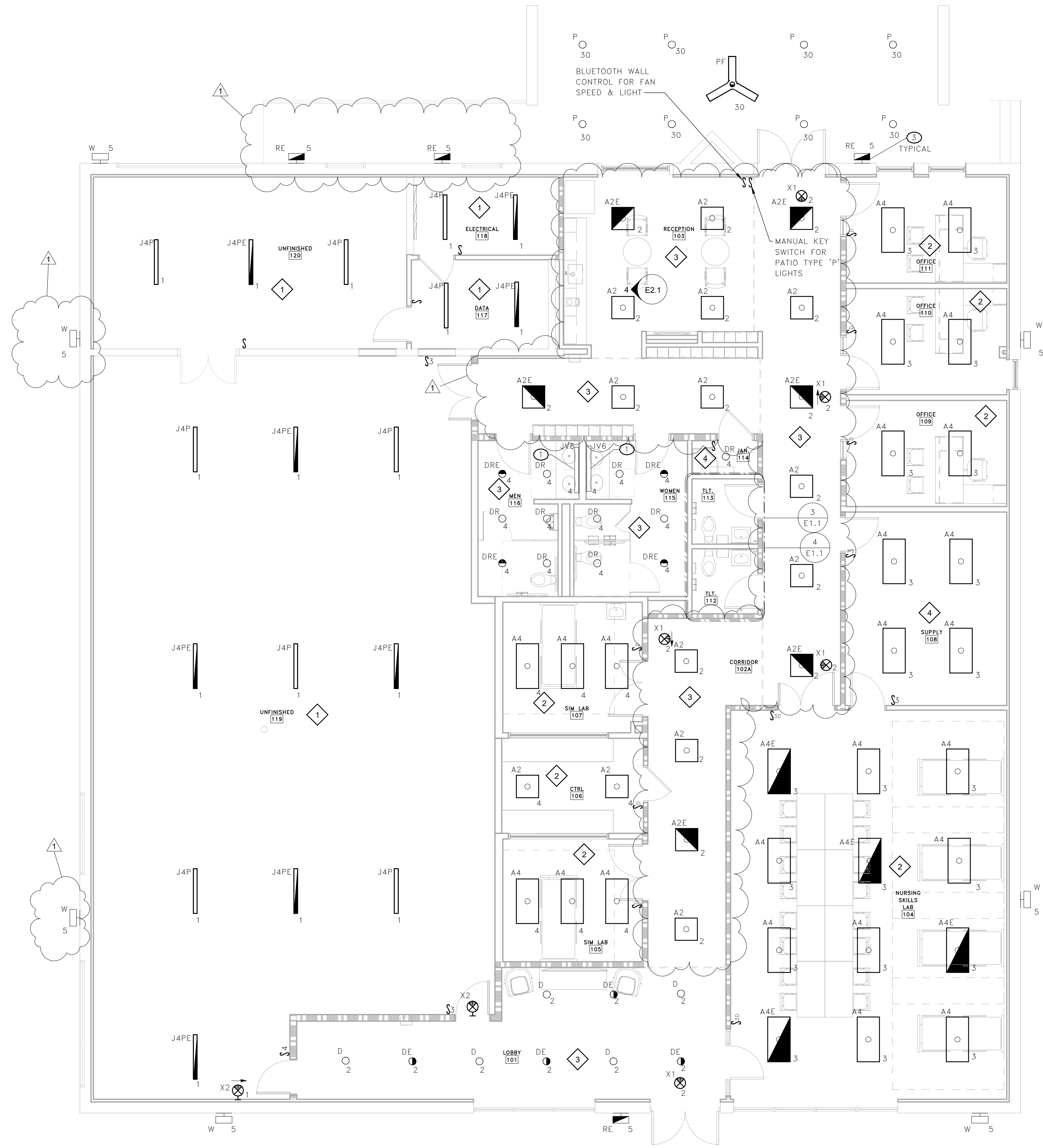
Drawing No.
E0.50

No.	Description	Date	Project Number
1	Electrical Panel 2	10/20/2020	LS-971-20-1
			Drawn By
			Checked By
			Date
			10/20/2020

UNIVERSITY OF SOUTH CAROLINA
UNION - NURSING PROGRAM UPGRADES
410 E. MAIN ST
UNION, SC 29379
STATE PROJECT NO. HQ-9528/65003415-3



BOUDREAU
inspired design
1519 Sumter Street
Columbia, SC 29201
803.799.0247 p
BoudreauxGroup.com



1 LIGHTING PLAN
E1.1 SCALE: 3/16" = 1'-0"

- KEY NOTES
- 1 PROVIDE 1" SLIM JUNCTION BOX (MODEL # JB-0501) WITH LIGHT FIXTURE.
 - 2 DELETE TYPE 'J4WE' FIXTURE IF ALTERNATE No. 1 IS ACCEPTED.
 - 3 TYPE 'W' AND 'WE' FIXTURES SHALL BE CONNECTED TO A 365-DAY, PROGRAMMABLE ELECTRONIC TIMER. LIGHT FIXTURES SHALL BE CONNECTED TO BE TURNED "ON" AND TURNED "OFF" AT TIMES SPECIFIED BY OWNER. COORDINATE PROGRAMMING WITH OWNER. INTERMATIC MODEL ET90215CR OR EQUAL.

- GENERAL NOTES
- 1 ALL LIGHT FIXTURES SHOWN ARE FED FROM PANEL 'L1' UNLESS OTHERWISE NOTED.
 - 2 INTERIOR LIGHTS SHALL BE FED FROM PANEL 'L1'.
 - 3 EXTERIOR LIGHTS SHALL BE FED FROM PANEL 'L1'.

3 TLT.112 & 113 ENLARGED PLAN - ALTERNATE No. 1
E1.1 SCALE: 3/8" = 1'-0"

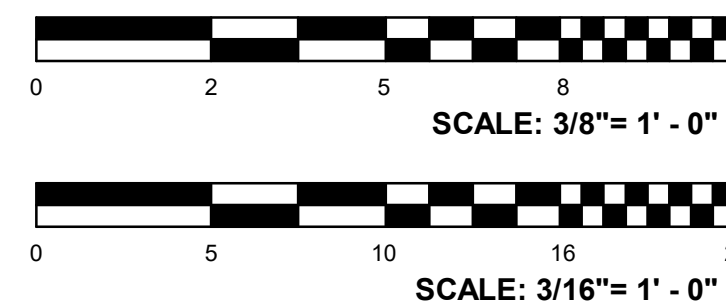
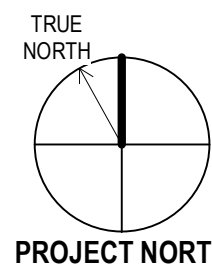
4 TLT. 112 & 113 ENLARGED PLAN - BASE BID
E1.1 SCALE: 3/8" = 1'-0"

LIGHT FIXTURE PLAN KEY

- CE d SHADING INDICATES EMERGENCY FIXTURE SUPPLIED WITH EMERGENCY BATTERY PACK
- A2 = UPPERCASE LETTER / LETTERS INDICATE FIXTURE TYPE
d = LOWERCASE LETTER INDICATES SWITCH IDENTIFICATION
EM = INDICATES NON-SWITCHED "EMERGENCY"
A/9 = DESIGNATES PANEL NAME: CIRCUIT NUMBER

NOTE:
ALL "EM" FIXTURES INDICATED IN PLAN CONTAIN EMERGENCY BATTERY PACKS. ALL EMERGENCY BATTERY PACK FIXTURES REQUIRE AN EXTRA CONSTANT POWER CONDUCTOR TO BE CONNECTED TO THE EMERGENCY BATTERY FOR CHARGING. CONDUCTOR MUST NOT BE CONTROLLED BY ANY LIGHTING SYSTEM OR HAVE POWER INTERRUPTED AT ANY TIME WHERE UTILITY POWER SHOULD FAIL. FIXTURES SHALL REMAIN OPERATIONAL FOR A MINIMUM 90 MINUTES.

LIGHT CONTROL SCHEME
LIGHTING CONTROL SYMBOL CORRELATES WITH DESIRED CONTROL SCHEME AS INDICATED IN THE LIGHTING CONTROL SCHEME SCHEDULE



BELKA
ENGINEERING ASSOCIATES
2519A PLATT SPRINGS ROAD | WEST COLUMBIA, SC
(803) 731-8550 Office | (803) 360-0443 Cell
CONTACT: CLIFF STRINGFIELD
CSTRINGFIELD@BEA-Consulting.com

Drawing Title:
LIGHTING PLAN

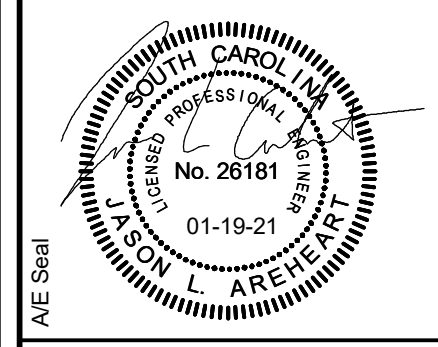
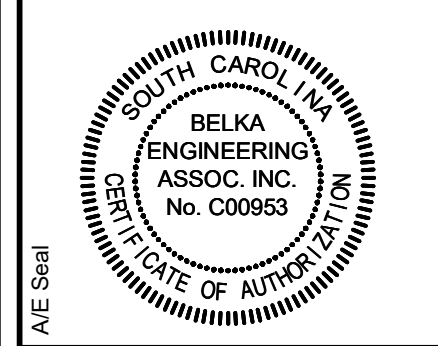
Drawing No.

E1.1

UNIVERSITY OF SOUTH CAROLINA
**UNION - NURSING PROGRAM
UPGRADES**
410 E. MAIN ST.
UNION, SC 29379
STATE PROJECT NO. HQ-9528/50003415-3

No.	Description	Date	Project Number
1	Alternates to 2	10/20/2020	LS-971-20-1
			Drawn By
			Checked By
			Date
			11/18/2021

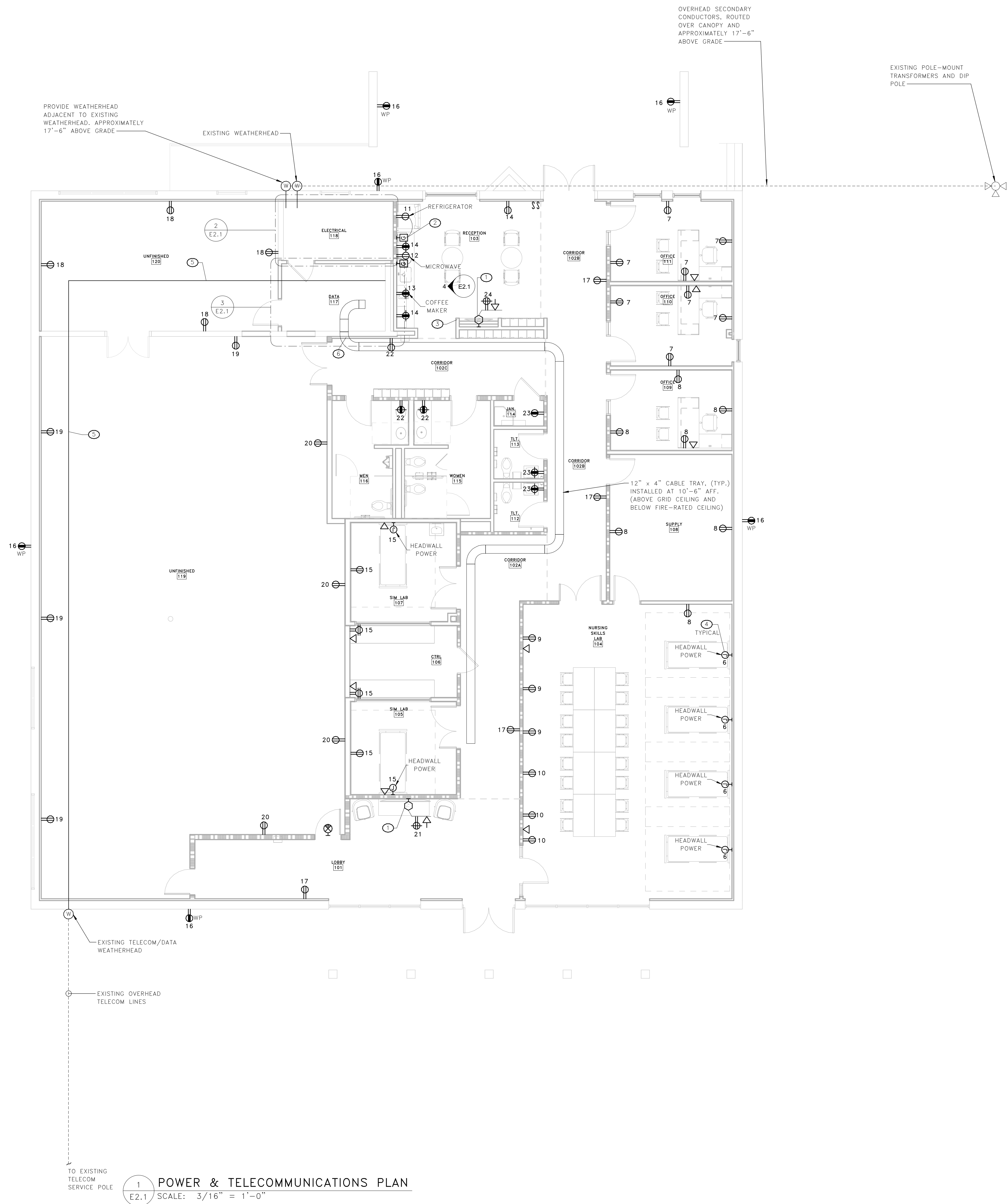
The University of South Carolina is not responsible for the accuracy of the information provided in this drawing. The user of this drawing is responsible for verifying the accuracy of the information provided in this drawing. The user of this drawing is responsible for verifying the accuracy of the information provided in this drawing.



BOUDREAU
inspired design

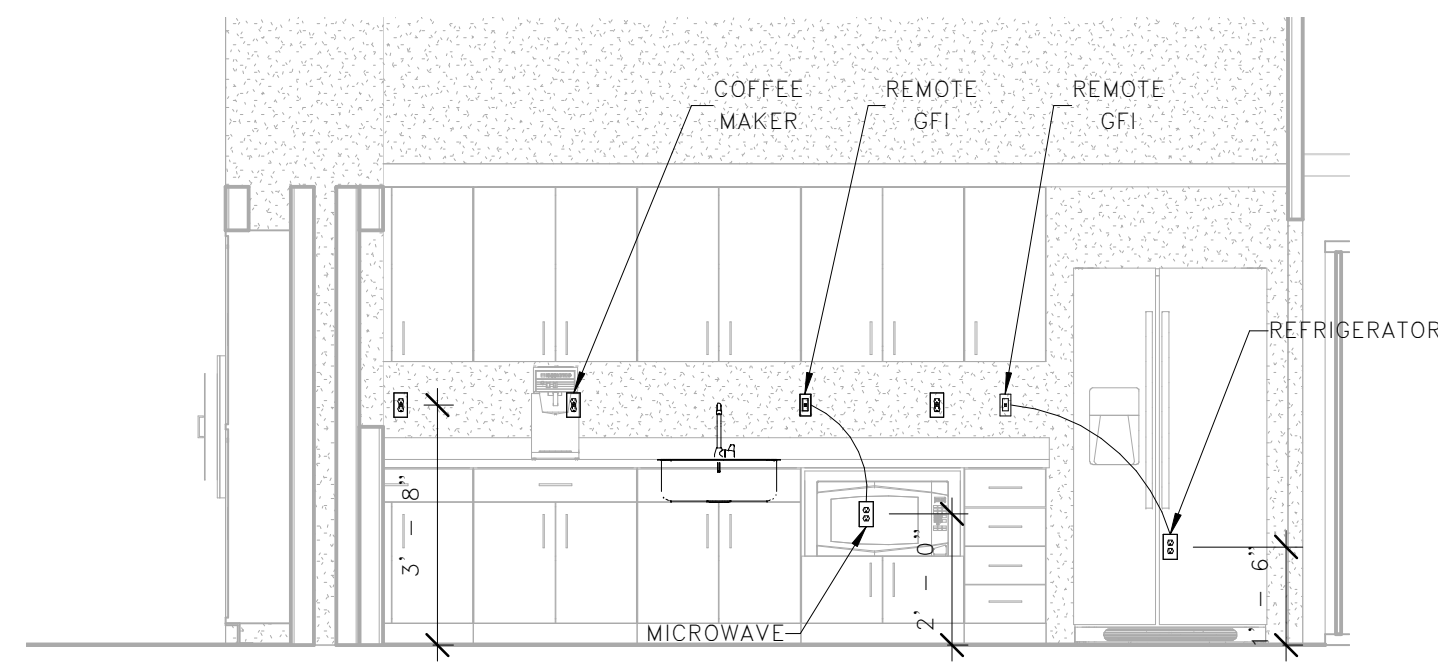
1519 Sumter Street
Columbia, SC 29201

803.799.0247 p
BoudreauGroup.com

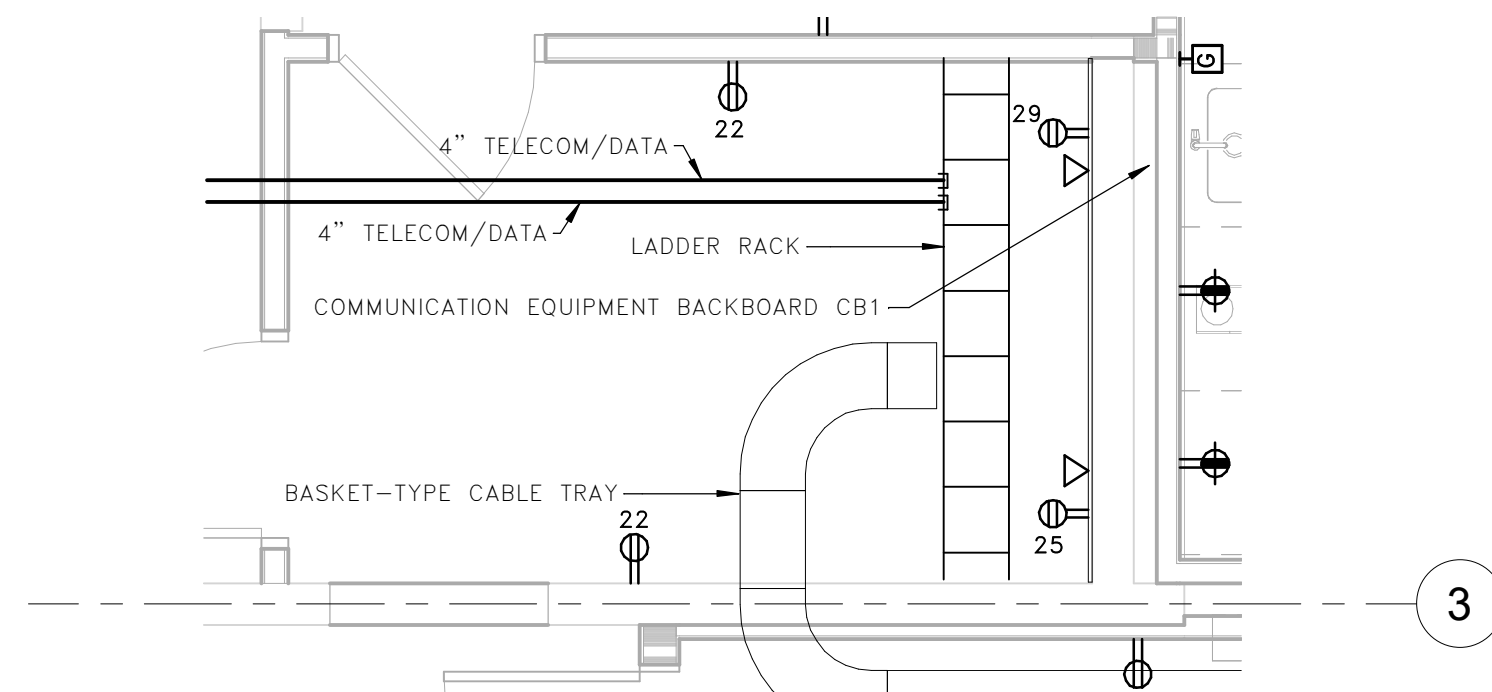


- KEY NOTES**
- 1 PROVIDE AN ALL-IN-ONE BACKBOX, LEGRAND CHIEF PAC 525FW OR EQUAL FOR THE FLAT PANEL TV. PROVIDE WITH PROVISION FOR DATA. PROVIDE 3/4" CONDUIT TO NEAREST CABLE TRAY. COORDINATE MOUNTING HEIGHT WITH ARCHITECT.
 - 2 DEDICATED REFRIGERATOR RECEPTACLE TO BE CONNECTED TO REMOTE GFI DEVICE LOCATE ABOVE COUNTERTOP.
 - 3 ROUTE CONDUIT AND CONDUCTORS FOR FLAT PANEL TV IN WALL AT THIS LOCATION WHERE WALL ATTACHES TO CEILING.
 - 4 PROVIDE CIRCUIT TO JUNCTION BOX FOR HEADWALL POWER. COORDINATE EXACT LOCATION WITH OWNER.
 - 5 COORDINATE TELECOM/DATA SERVICE WITH LOCAL VENDOR. PROVIDE TWO 4" CONDUITS WITH PULLSTRING ROUTED ABOVE CEILING FROM DATA RM 117 BACKBOARD TO EXISTING TELECOM/DATA WEATHERHEAD.
 - 6 PROVIDE THREE 4" SLEEVES WITH STI EZ-PATH SERIES 33 FIRE RATED PATHWAY WHERE MAKING PENETRATION THROUGH FIRE/SMOKE RATED PARTITIONS.

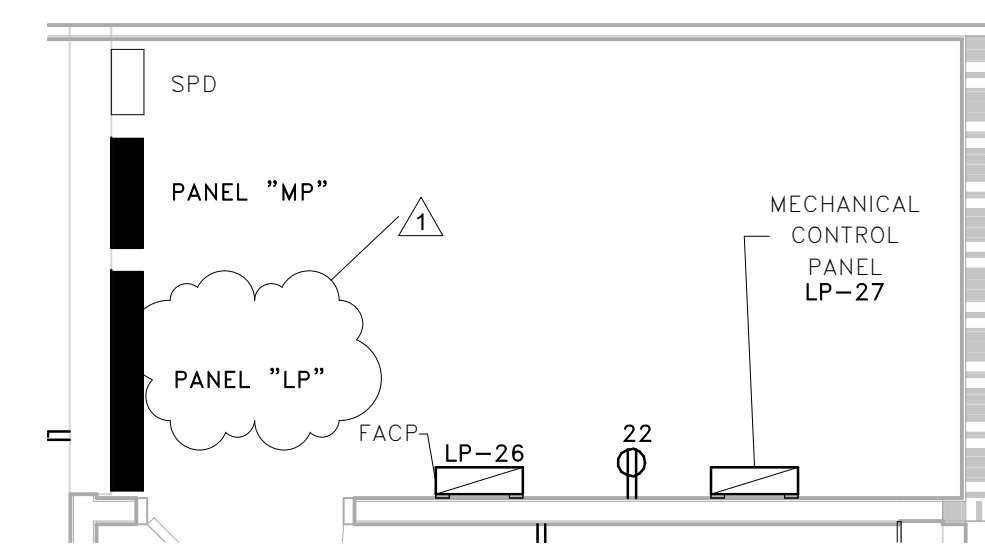
- GENERAL NOTES**
- 1 PROVIDE 1" CONDUIT WITH PULLSTRING FROM EACH DATA OUTLET TO ABOVE CEILING AND TO NEAREST CABLE TRAY.
 - 2 RECEPTACLE CIRCUITS SHALL BE FED FROM PANEL 'L1'.
 - 3 SEE SHEET E010 FOR MORE INFORMATION ON ELECTRICAL SERVICE.



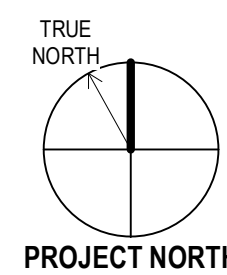
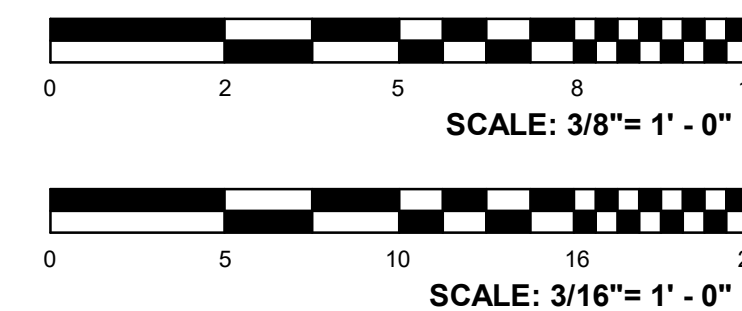
4 Elevation 1 - BREAK AREA 103
E2.1 SCALE: 3/8" = 1'-0"



3 ENLARGED DATA RM 117 PLAN
E2.1 SCALE: 3/8" = 1'-0"



2 ENLARGED ELECT. RM PLAN
E2.1 SCALE: 3/8" = 1'-0"



BELKA
ENGINEERING ASSOCIATES
2519A PLATT SPRINGS ROAD | WEST COLUMBIA, SC
(803) 731-9550 OFFICE | (803) 360-6445 CELL
CONTACT: CLIFF STRINGFIELD
CSTRINGFIELD@BEA-Consulting.com

POWER & TELECOMMUNICATIONS PLAN

E2.1

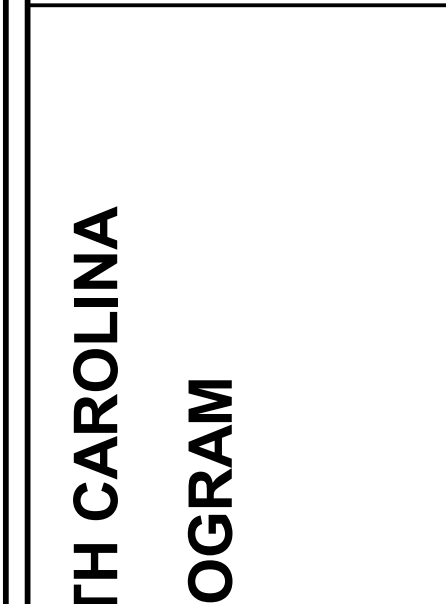
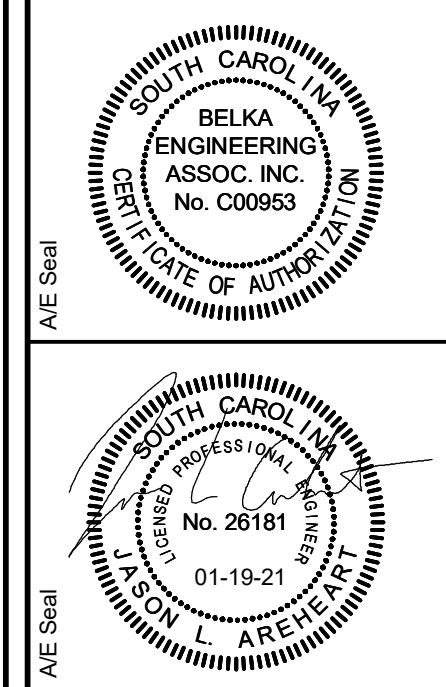
UNIVERSITY OF SOUTH CAROLINA
UNION - NURSING PROGRAM
UPGRADES
410 E. MAIN ST.
UNION, SC 29379
STATE PROJECT NO. HQ-9528/50003415-3

No.	Description	Date	Project Number
1	As per item 2	10/20/2020	LS-971-20-1
			Drawn By
			Checked By
			Date
			2/3/2021

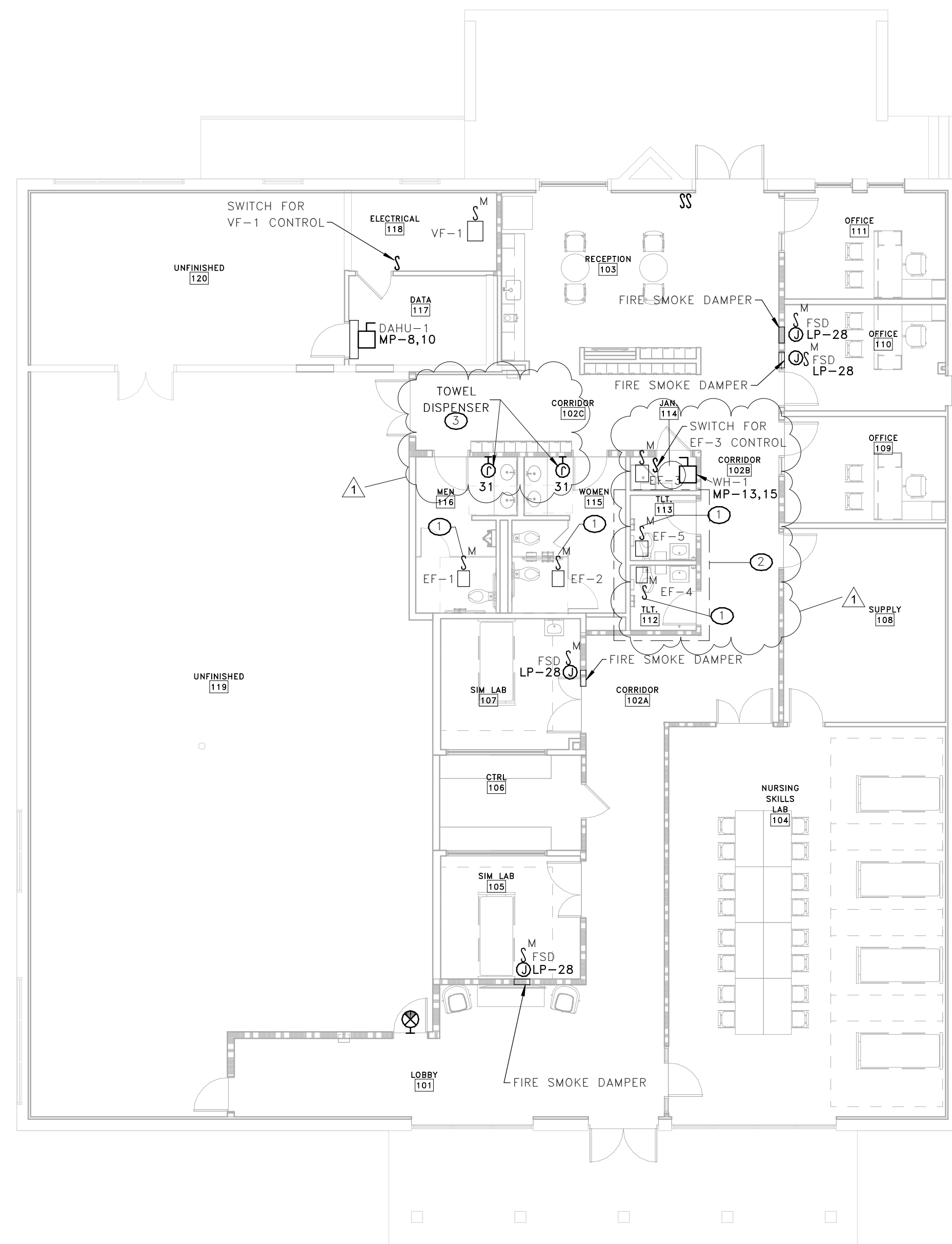
Drawing Title.

Drawing No.

E2.1



BOUDREAU
inspired design
1519 Sumter Street
Columbia, SC 29201
803.799.0247 p
BoudreauxGroup.com

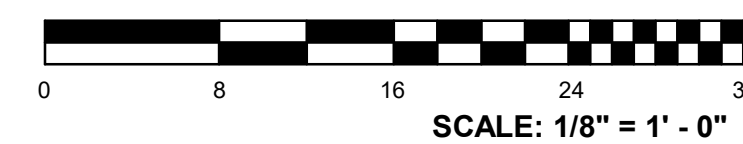


1 FIRST FLOOR MECHANICAL EQUIPMENT PLAN
E4.1 SCALE: 1/8" = 1'-0"

2 ELECTRICAL ROOF PLAN
E4.1 SCALE: 1/8" = 1'-0"

- ### KEY NOTES
- 1 CONNECT EXHAUST FAN TO LOCAL LIGHTING CIRCUIT AND INTERLOCK WITH LIGHTING CONTROLS SUCH THAT EXHAUST FAN RUNS WHEN LIGHTS ARE ON. SEE SHEET E101 FOR MORE INFORMATION ON LIGHTING CIRCUIT.

- ### GENERAL NOTES
- 1 MECHANICAL AND HVAC LOADS SHALL BE FED FROM PANEL "MP" UNLESS NOTED OTHERWISE.
 - 2 EXHAUST FANS EF-1 THROUGH EF-5 AND VF-1 SHALL BE CONNECTED TO LOCAL LIGHTING CIRCUIT.
 - 3 ROOF PENETRATIONS BY CONDUITS SHALL BE THRU MECHANICAL OPENING OR BY USE OF PITCH POCKETS.



Drawing Title.

MECHANICAL POWER PLAN

Drawing No.

E4.1

UNIVERSITY OF SOUTH CAROLINA
UNION - NURSING PROGRAM
UPGRADES
410 E. MAIN ST.
UNION, SC 29379
STATE PROJECT NO. H40-9528/50003415-3

[illegible]

BOUDREAU
inspired design

1519 Sumter Street
Columbia, SC 29201
803.796.0247 p
BoudreauxGroup.com